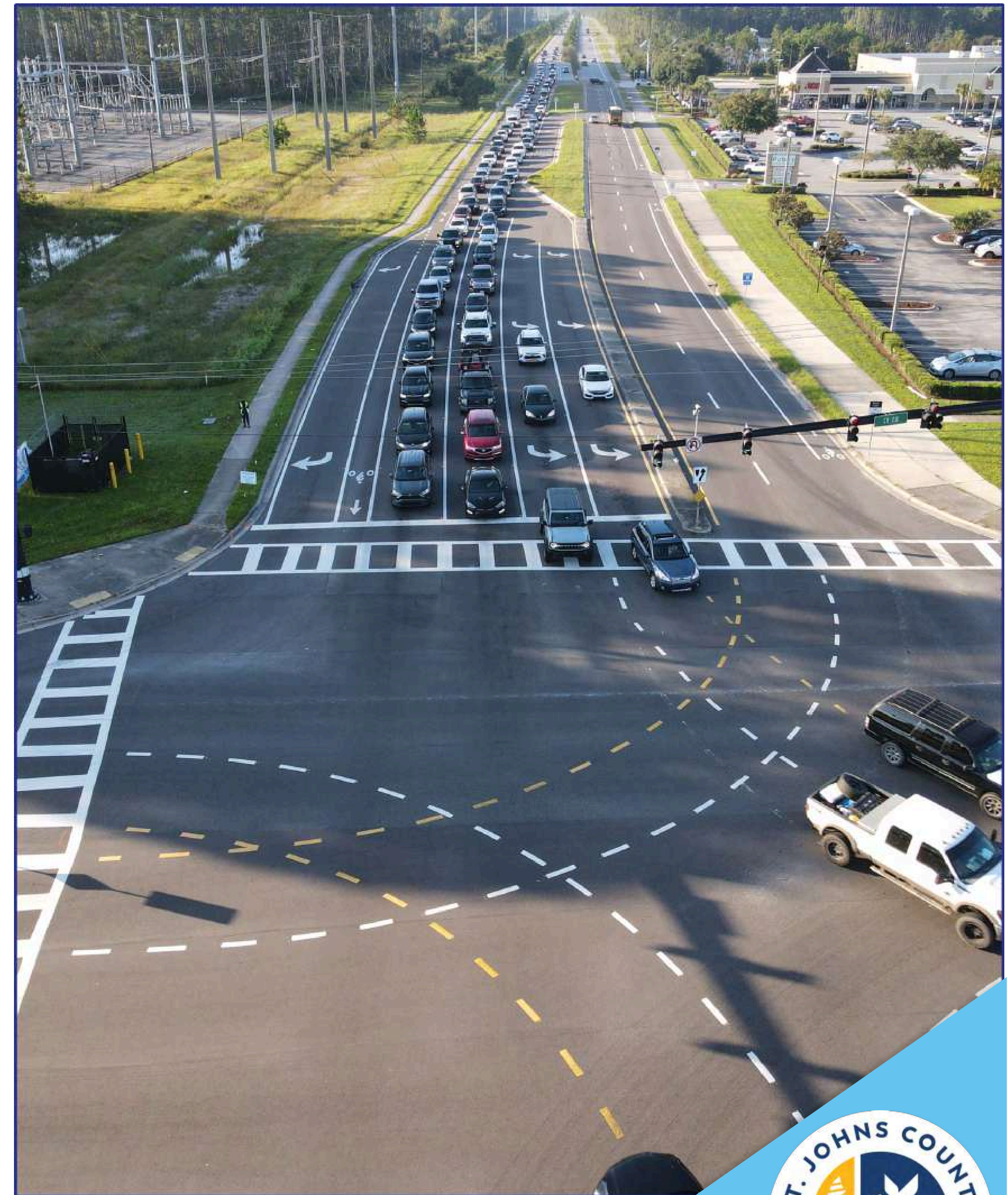
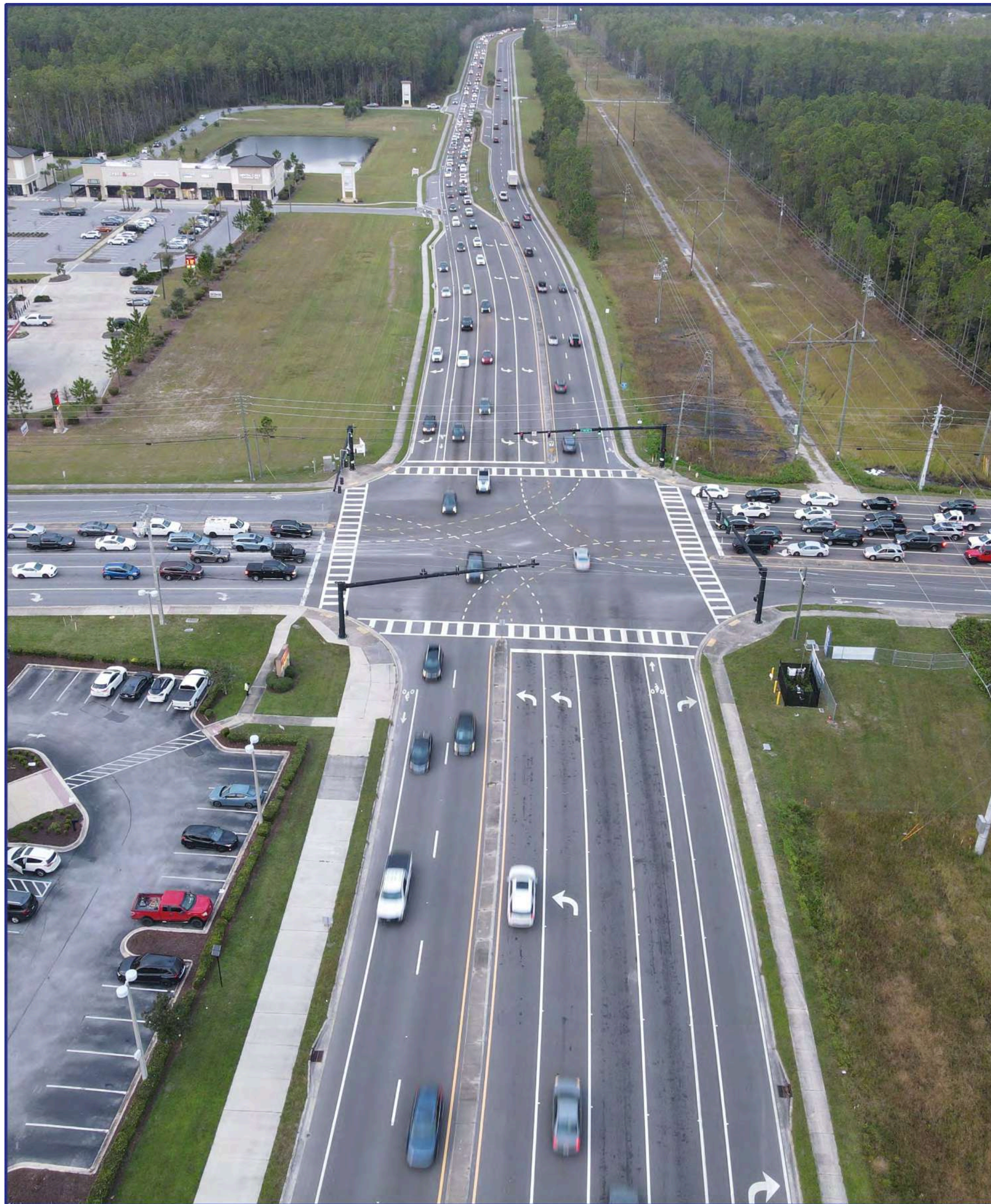


# Welcome to the CR 210 at CR 2209 (St. Johns Parkway) Intersection Access Management Improvements

## HYBRID PUBLIC MEETING



# PROJECT LOCATION MAP

CR 210 at CR 2209 (St. Johns Parkway) Intersection Access Management Improvements

Financial Management Number: 441371-1 | St. Johns County, Florida



**LEGEND**

Project Limits

0      0.05      0.1  
Miles

# EXISTING & FUTURE TRAFFIC VOLUMES

CR 210 at CR 2209 (St. Johns Parkway) Intersection Access Management Improvements

Financial Management Number: 441371-1 | St. Johns County, Florida

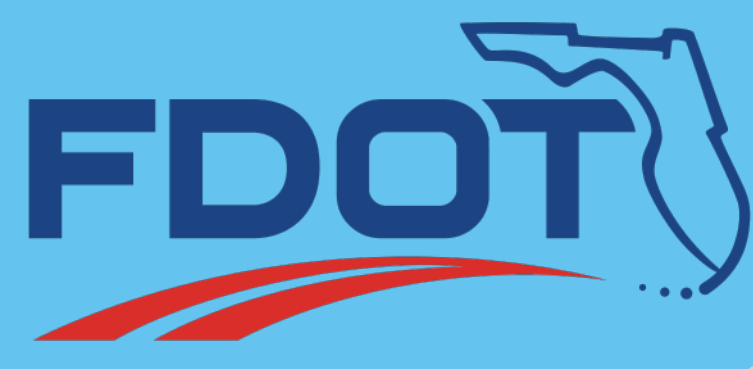


**LEGEND**

### Existing (2025) AADT\*

### Future (2050) AADT\*

\*Annual Average Daily Traffic (AADT)



# PROJECT SCHEDULE & COST

CR 210 at CR 2209 (St. Johns Parkway) Intersection Access Management Improvements

Financial Management Number: 441371-1 | St. Johns County, Florida



Project Phase	Status
Project Development & Environment (PD&E)	Ongoing
Design	Ongoing
Right-of-Way Acquisition	2027 - 2028
Construction and Construction Engineering & Inspection (CEI)	2027 - 2029
<b>Estimated total Construction and CEI cost is \$19.5 million</b>	

*Schedule and Cost are preliminary and subject to change*

# ACCESS MANAGEMENT



**What is Access Management?** Access management is the careful planning of the location, design, and type of access to properties, businesses, and homes. This also includes median openings and driveway entrances. The goal of access management is to promote safe and efficient movement of people and goods by reducing potential conflicts on the roadway. Access management improves safety by reducing the number of potential conflict points for users of the transportation network, thereby lowering the risk of crashes.



Median Openings



Driveway Openings



Interchanges



Traffic Signals

If you have concerns about access that affects your property or business, you may request an opportunity to present your concerns in person or in writing by contacting:

**Duane Kent, P.E.**

St. Johns County Engineer  
2750 Industry Center Road  
St. Augustine, Florida 32084  
(904) 209-0266

[rkent@sjcfl.us](mailto:rkent@sjcfl.us)

# TITLE VI - NONDISCRIMINATION PROGRAM

The Florida Department of Transportation complies with various non-discrimination laws and regulations, including:

## **Title VI of the Civil Rights Act of 1964**

Public participation is solicited without regard to race, color, national origin, age, sex, religion, disability or family status.

For questions or concerns, please contact either:

### **DOROTHY NEAL**

#### **District Two Title VI Coordinator**

Florida Department of Transportation

1109 South Marion Avenue

Lake City, Florida 32025-5874

(386) 961-7616

[Dorothy.Neal@dot.state.fl.us](mailto:Dorothy.Neal@dot.state.fl.us)

### **LISA BETHANCOURT**

#### **Equal Opportunity Office**

Florida Department of Transportation

605 Suwannee Street, MS 65

Tallahassee, Florida 32399-0450

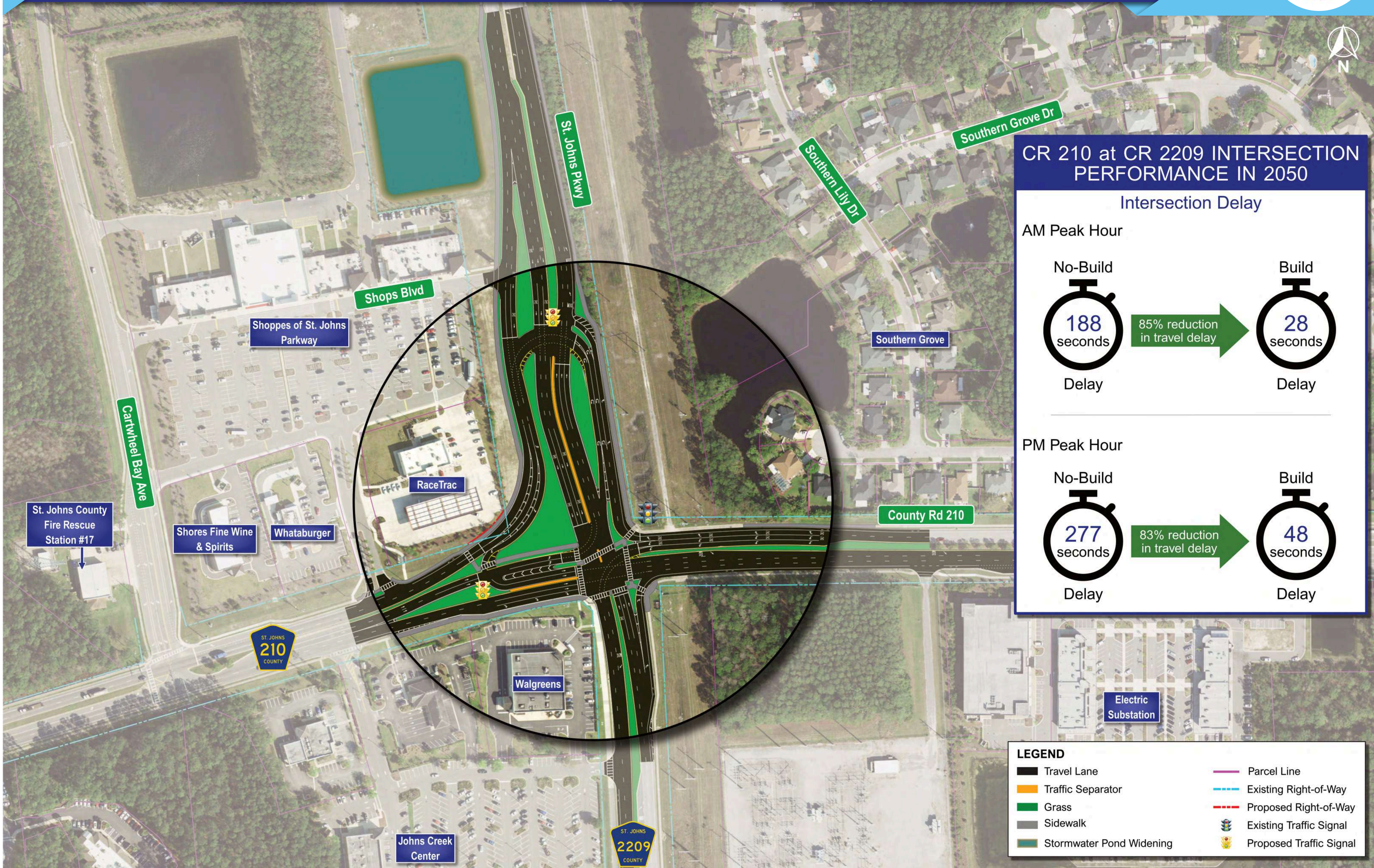
(850) 414-4742

[Lisa.Bethancourt@dot.state.fl.us](mailto:Lisa.Bethancourt@dot.state.fl.us)

# PROJECT BENEFITS

CR 210 at CR 2209 (St. Johns Parkway) Intersection Access Management Improvements

Financial Management Number: 441371-1 | St. Johns County, Florida



# PROJECT BENEFITS

CR 210 at CR 2209 (St. Johns Parkway) Intersection Access Management Improvements

Financial Management Number: 441371-1 | St. Johns County, Florida

## EXISTING CONDITIONS



## FUTURE CONDITIONS



## CR 210 at CR 2209 INTERSECTION PERFORMANCE IN 2050

Queues



Eastbound left-turn and Northbound through queues during morning rush hour reduced by 90%

Crashes



Approximately 54% reduction in crashes

# PROJECT BENEFITS

CR 210 at CR 2209 (St. Johns Parkway) Intersection Access Management Improvements

Financial Management Number: 441371-1 | St. Johns County, Florida



## PROPOSED IMPROVEMENTS at CR 210 and CR 2209 INTERSECTION



## CR 210 at CR 2209 INTERSECTION PERFORMANCE IN 2050

Queues



Southbound through queues during evening rush hour reduced by **90%**

### PM Peak Hour Southbound Queue Backing up to SR 9B



### PM Peak Hour Southbound Queue at the Intersection

